

PLATE COMPACTOR INSTRUCTION MANUAL



INSTRUCTION MANUAL & PARTS BOOK

PLATE COMPACTOR

(Original Language)

B2420



POWERFUL - EFFICIENT - DEPENDABLE

BARTELL MORRISON INC.
375 ANNAGEM BLVD, MISSISSAUGA, ONTARIO, CANADA, L5T 3A7, 905-364-4200 FAX 905-364-4201
12 INDUSTRIAL DRIVE, KEYPORT, NEW JERSEY, USA, 07735, 732-566-5400 FAX 732-5444

BARTELL MORRISON (USA) LLC

Doc. # OI-B09008
PB-B09019
Orig. Rel. 06/2009
Curr. Rev. - 03
Rev. Date - 12/2010

PLATE COMPACTOR INSTRUCTION MANUAL

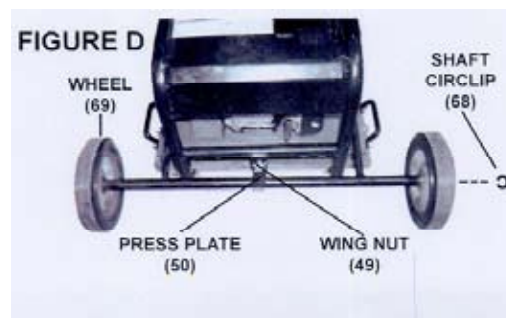
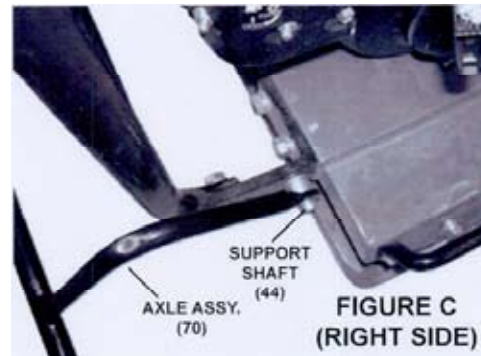
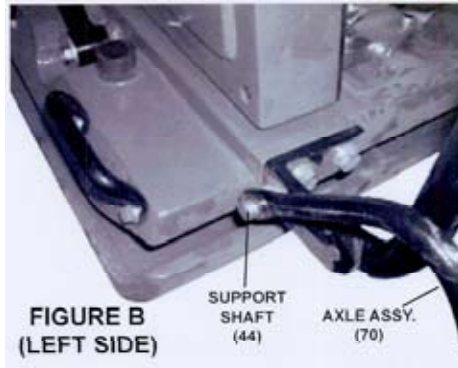
BASIC SPECIFICATIONS

Engine Fuel	Type	89+ octane unleaded gasoline
	Capacity	1 Gallon
Engine Lubricant	Type	SAE 30W (above 32° F) SAE 5W-30 (at 32° F or below)
	Capacity	20-1/4 Ounces
Engine Type		Air cooled, 4-stroke, single cylinder, overhead camshaft
Engine Horsepower		6.5 HP
Starter Type		Recoil
Low Oil Protection		Yes
Spark Arrester		Yes
Recommended Spark Plug Type		NGK® BR-6HS CHAMPION® RL86C
Compactor Plate Dimensions		20" L x 22-1/4" W x 2-1/2" H
Maximum Shock Force		6,300 Pounds
Vibrations Per Minute		5,560
Clutch Type		Centrifugal
Drive Belt Type		V-Belt, A-838 15" Diameter Qty. 2
Water Tank Capacity		5 Gallons
Net Weight w/Engine		278 Pounds
Accessories		Spark Plug Wrench (1) Clutch Shear Key (1) Engine Manual (1) Operating Manual (1)
Oil Capacity		0.63 Quarts
Fuel Tank Capacity		1 Gallon

Note: Additional engine specifications are found in the engine manual supplied with this equipment.

PLATE COMPACTOR INSTRUCTION MANUAL

- To install the Axle (70) assembly, insert the left side of the Axle onto the left Support Shaft (44). Then insert the right side of the Axle onto the right support Shaft. **See Figures B and C.**
- To attach the Wheels (69), insert a Wheel onto each end of the Axle (70) assembly. Then secure the Wheels to the Axle, using one Shaft Circlip (68) for each Wheel. **See Figure D.**
- Once the Axle (70) assembly and Wheels (69) are attached, raise the Axle assembly up to the Press Plate (50) and lock the Axle and Wheels in an upright position using the Wing Nut (49). **See Figure D.**



- IMPORTANT: To prevent damage to the Wheels (69), always lock the Axle (70) assembly and Wheels in the upright position when the Compactor is not in use.**
- To fill the Water Tank (21), unscrew and remove the Water Tank Cap (20). Fill the Water Tank with approximately five gallons of **cool, clean water**. Then replace the Water Tank Cap. **See Figure E.**



PLATE COMPACTOR INSTRUCTION MANUAL

STORAGE

1. Wait for engine to cool, then clean the Compactor with a garden hose, brush, or compressed air.
2. Clean the engine and/or prepare it for storage according to the engine manual instructions.
3. Apply a thin coat of rust preventive oil to all uncoated metal parts.
4. Store in a clean, dry, safe area out of reach of children and other unauthorized persons.
5. For cold weather operation, store the Compactor in a cool dry area to prevent condensation and premature wear.

TROUBLESHOOTING

PROBLEM	POSSIBLE CAUSES	PROBABLE SOLUTIONS
Undesireable compacting results.	<ol style="list-style-type: none">1. Ground surface too dry.2. Engine speed too low.3. Compactor being pushed/pulled too quickly.4. Compactor not positioned level on ground surface.5. Too much debris (rocks, tree limbs, etc.) on ground surface.6. V-Belts on Compactor loose or worn.	<ol style="list-style-type: none">1. Make sure there is a sufficient amount of cool, clean water in the Water Tank. Make sure Water Valve on Water Tank is fully open.2. Increase Engine speed.3. Push/pull Compactor at a slower pace.4. Keep Compactor flat and level on ground surface.5. Clean ground surface of excessive debris.6. Tighten or replace V-Belts.

Follow all safety precautions whenever diagnosing or servicing the equipment or engine.

PLEASE READ THE FOLLOWING CAREFULLY

THE MANUFACTURER AND/OR DISTRIBUTOR HAS PROVIDED THE PARTS LIST AND ASSEMBLY DIAGRAM IN THIS MANUAL AS A REFERENCE TOOL ONLY. NEITHER THE MANUFACTURER OR DISTRIBUTOR MAKES ANY REPRESENTATION OR WARRANTY OF ANY KIND TO THE BUYER THAT HE OR SHE IS QUALIFIED TO MAKE ANY REPAIRS TO THE PRODUCT, OR THAT HE OR SHE IS QUALIFIED TO REPLACE ANY PARTS OF THE PRODUCT. IN FACT, THE MANUFACTURER AND/OR DISTRIBUTOR EXPRESSLY STATES THAT ALL REPAIRS AND PARTS REPLACEMENTS SHOULD BE UNDERTAKEN BY CERTIFIED AND LICENSED TECHNICIANS, AND NOT BY THE BUYER. THE BUYER ASSUMES ALL RISK AND LIABILITY ARISING OUT OF HIS OR HER REPAIRS TO THE ORIGINAL PRODUCT OR REPLACEMENT PARTS THERETO, OR ARISING OUT OF HIS OR HER INSTALLATION OF REPLACEMENT PARTS THERETO.

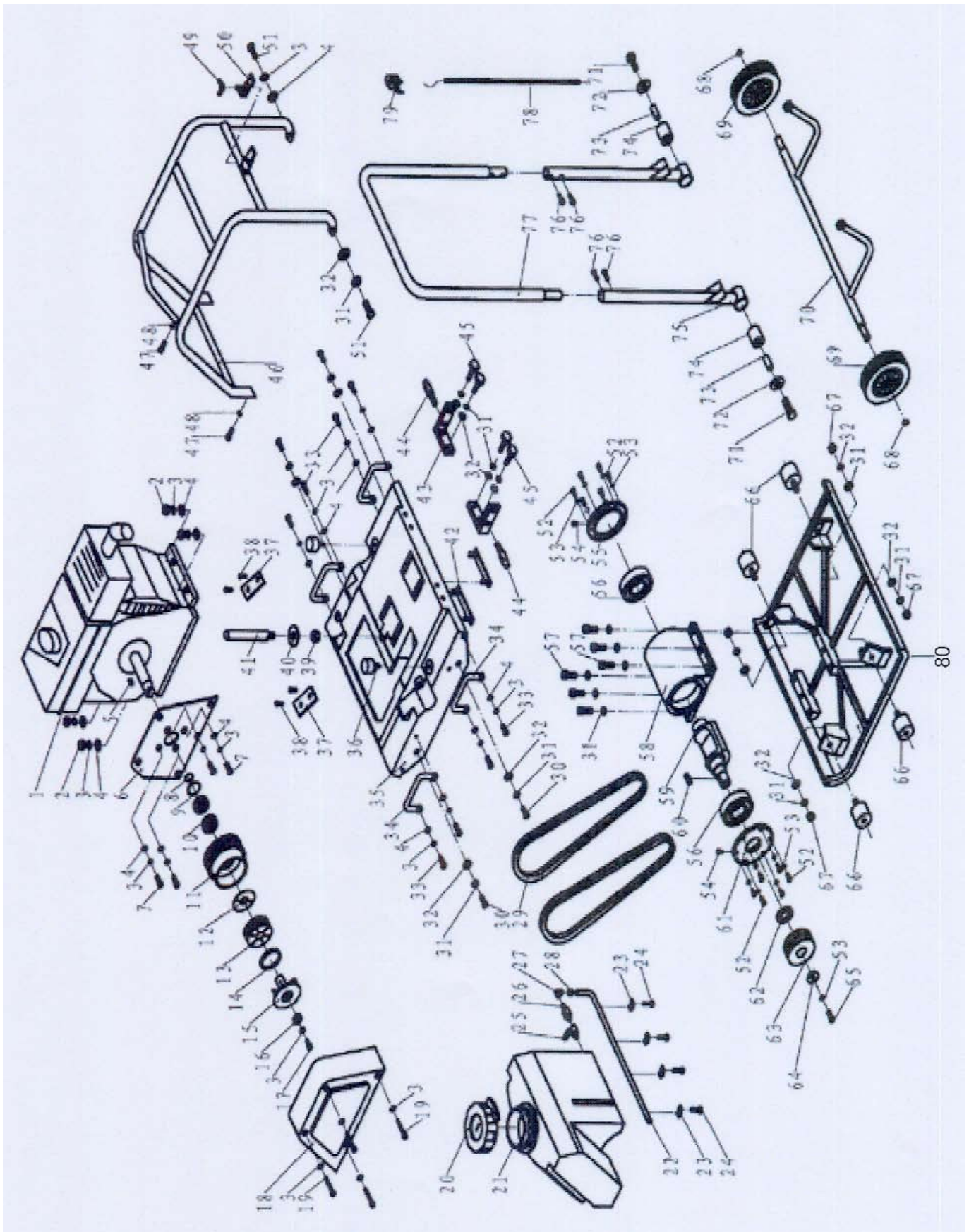
PLATE COMPACTOR INSTRUCTION MANUAL

PARTS LIST

ITEM	PART #	Description	QTY	ITEM	PART #	Description	QTY
1		Engine	1	41		Fixing Shaft	1
2		Self-Lock Nut (M8)	4	42		Fixing Plate	2
3		Spring Washer (#8)	21	43		Support Plate	2
4		Flat Washer (#8)	16	44		Support Shaft	2
5		Flat Key (5 x 30)	1	45		Bolt (M12 x 30)	4
6		Fixing Plate	1	46		Safety Frame	1
7		Whorl Rod	4	47		Hex Bolt (M10 x 16)	2
8		Shaft Circlip (#35)	1	48		Spring Washer (#10)	2
9		Hole Circlip (#35)	1	49		Wing Nut (M8)	1
10		Bearing (6000)	2	50		Press Plate	1
11		Drive Pulley	1	51		Bolt (M12 x 30)	2
12		Shield	1	52		Bolt (M6 x 25)	12
13		Idle Block	6	53		Spring Washer (#6)	13
14		Spring	1	54		Oil Cup (M10 x 1)	2
15		Wheel	1	55		Cover	1
16		Flat Washer (#8)	1	56		Bearing (6309)	2
17		Whorl Rod (5/16" x 30)	1	57		Hex Bolt (M12 x 35)	6
18		Pulley Cover	1	58		Sleeve	1
19		Hex Bolt (M8 x 75)	4	59		Eccentricity Shaft	1
20		Water Tank Cap	1	60		Flat Key (10 x 25)	1
21		Water Tank	1	61		Cover	1
22		Water Pipe	1	62		Seal Washer (55 x 35 x 8)	1
23		Pipe Clamp	1	63		Pulley	1
24		Bolt (M6 x 16)	4	64		Washer	1
25		Water Valve	1	65		Hex Bolt (M6 x 20)	1
26		Connect Hole Bolt	1	66		Cushion Block	4
27		Elbow	1	67		Self-Lock Nut (M12)	4
28		Connector	1	68		Shaft Circlip (#16)	2
29		V-Belt (A 838)	2	69		Wheel	2
30		Hex Bolt (M12 x 30)	4	70		Axle Assembly	1
31		Spring Washer (#12)	20	71		Bolt (M12 x 60)	2
32		Flat Washer (#12)	14	72		Shield	2
33		Bolt (M8 x 20)	8	73		Cover	2
34		Handle	4	74		Cushion Cover	2
35		Cover	1	75		Lower Handle	1
36		Rubber Stick	2	76		Bolt (M8 x 16)	4
37		Rubber Plate	2	77		Upper Handle	1
38		Screw (M5 x 8)	4	78		Spring	1
39		Nut (M12)	1	79		Handle	1
40		Flat Washer (#12)	1	80		Plate	1

PLATE COMPACTOR INSTRUCTION MANUAL

ASSEMBLY DIAGRAM



BARTELL MORRISON INC.
375 ANNAGEM BLVD, MISSISSAUGA, ONTARIO, CANADA, L5T 3A7, 905-364-4200 FAX 905-364-4201
12 INDUSTRIAL DRIVE, KEYPORT, NEW JERSEY, USA, 07735, 732-566-5400 FAX 732-5444

BARTELL MORRISON (USA) LLC

Created: 06/09
Revised: 12/10