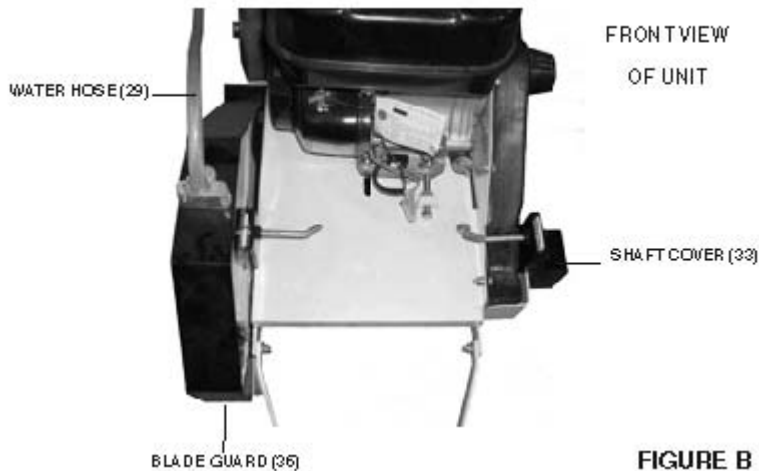


CONCRETE SAW INSTRUCTION MANUAL

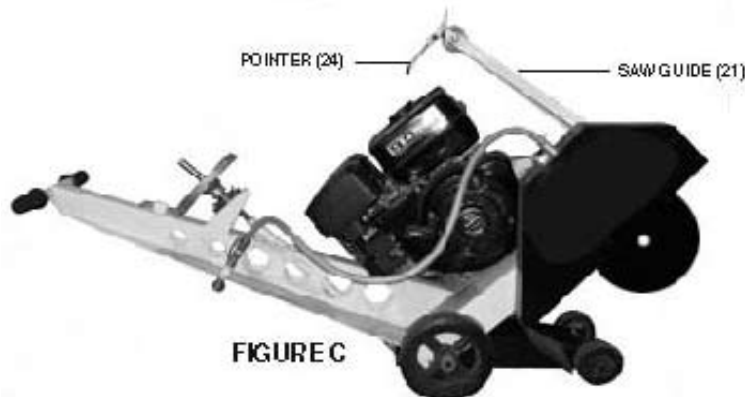
5. Remove the Blade Guard Assembly (36), and re-install on the other side of the Concrete Saw. **(See Figure B)**
6. Re-install the Shaft Cover Assembly (33) on the side of the unit. **(See Figure B)**
7. Make sure the Water Hose (29) is kept clear of hot and moving parts of the Concrete Saw. **(See Figure B)**



OPERATING INSTRUCTIONS

1. **IMPORTANT! Your Warranty is voided if:**
You do not put engine oil in the Engine's crankcase prior to its first use. Before each use, check the oil level. Never run the Engine with low or no engine oil. Running the Engine with low or no Engine oil will permanently damage the Engine.
2. **Make sure the Engine (30) of the Concrete Saw is filled with the proper amount of oil and unleaded gasoline recommended by the Engine manufacturer before attempting to start the Engine.** Failure to do so WILL damage the Engine and void the warranty. **(See Engine manufacturer's instruction manual)**
3. Check to make sure the V-Belts (35) are properly tensioned. **(See page 11 of this manual)**

At any time the Concrete Saw is being transported, the Saw Guide (21) must be in its locked (upward) position and the Pointer (24) in its downward position. **(See Figure C)**



CONCRETE SAW INSTRUCTION MANUAL

TROUBLESHOOTING

PROBLEM	POSSIBLE CAUSES	PROBABLE SOLUTIONS
Engine will not start	<ol style="list-style-type: none"> 1. Low or no Engine oil. 2. Low or no gasoline in tank. 3. Improper use of Engine choke. 4. Damaged electrical and/or fuel system. 5. Ignition switch is "OFF". 6. Loose or disconnected spark plug wire. 7. Fuel valve if "OFF". 	<ol style="list-style-type: none"> 1. Check for proper level of Engine oil. 2. Check level of gasoline in tank. 3. Refer to Engine manufacturer's instruction manual for proper starting procedures. 4. Have a qualified service technician repair/replace Engine. 5. Turn switch "ON". 6. Fasten securely to plug. 7. Turn valve "ON".
Saw Blade not spinning.	<ol style="list-style-type: none"> 1. Engine not operating at full throttle. 2. V-Belts loose damaged. 	<ol style="list-style-type: none"> 1. Adjust Engine up to full throttle. 2. Retighten or replace V-Belts.

CONCRETE SAW INSTRUCTION MANUAL

PARTS LIST

ITEM	PART #	Description	QTY	ITEM	PART #	Description	QTY
1	30451	Chassis Assy.	1	26	30426	Swivel Hose Fitting	1
2	30402	Rear Wheel	2	27	30427	Hose Washer	2
3	30403	Rear Axle Bearing	2	28	30428	Service Lever	1
4	30404	Splash Guard	2	29	30429	Water Hose	1
5	30405	Pivot Frame Assy.	1	30	*	Gas Engine	1
6	30406	Front Wheel	2	31	30431	Black Belt Guard	1
7	30407	Set Screw Collar	2	32	30432	Front Belt Guard	1
8	30408	Blade Shaft	1	33	30433	Shaft Cover Assy.	1
9	30409	Blade Shaft Bearing	2	34	30434	Engine Pulley	1
10	30410	Inner Blade Collar	1	35	30435	V-Belt	2
11	30411	Outer Blade Collar	1	36	30436	Blade Guard Assy.	1
12	30412	Pulley	1	37	30437	Blade Wrench	1
13	30413	Handle	2	38	30438	Water Manifold	1
14	30414	Screw Jack Holder	1	39	30439	Brass Water Pipe	2
15	30415	Screw Jack	1	40	30440	Guard Lock	3
16	30416	Bearing Bracket Adjuster	1	41	30441	Grease Fitting	6
17	30417	Hand Wheel Assy.	1	42	30442	Hose Clamp	2
18	30418	Screw Jack Nut	1	43	30443	Hose Nipple	1
19	30419	Handle Wheel Knob	1	44	30444	Blade Splash Guard	1
20	30420	Handwheel Lock Pin	1	45	30445	Screw Jack Nut	1
21	30421	Saw Guide	2	46	30446	Hex Bolt	1
22	30422	Guide Wheel	1	47	30447	Hex Bolt	1
23	30423	Washer Spacer	2	48	30448	Hex Bolt	1
24	30424	Pointer	1	49	30449	Saw Depth Stop	1
25	30425	Nut	1	50	30450	Outer Circlip	2

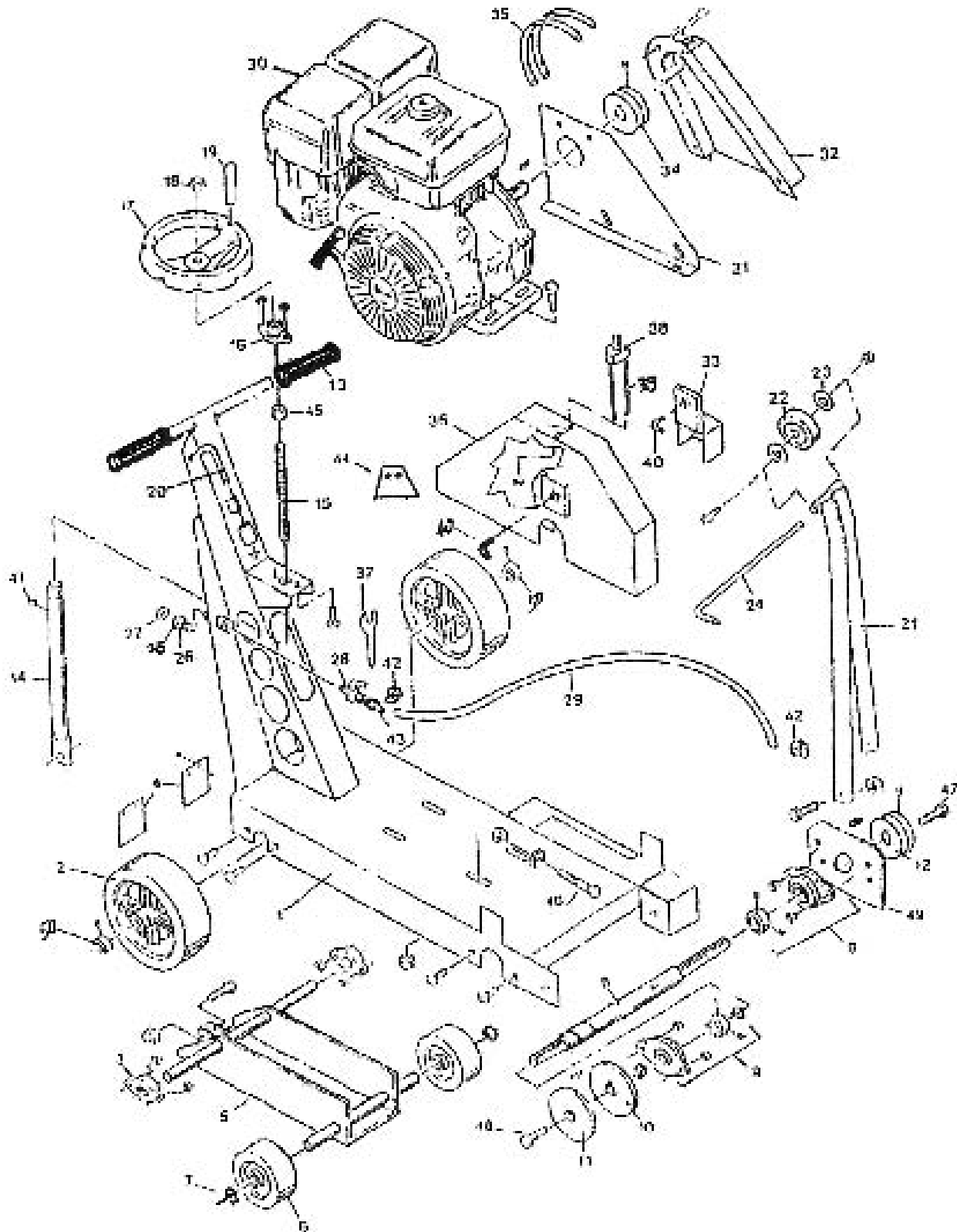
* Engine part number is dependent on the specific Gas Engine. Please contact factory.

NOTE:

Some parts are listed and shown for illustration purposes only,
and are not available individually as replacement parts.

CONCRETE SAW INSTRUCTION MANUAL

ASSEMBLY DIAGRAM



BARTELL MORRISON INC.
375 ANNAGEM BLVD, MISSISSAUGA, ONTARIO, CANADA, L5T 3A7, 905-364-4200 FAX 905-364-4201
12 INDUSTRIAL DRIVE, KEYPORT, NEW JERSEY, USA, 07735, 732-566-5400 FAX 732-5444

BARTELL MORRISON (USA) LLC

Created: 12/08
Revised: 12/10